

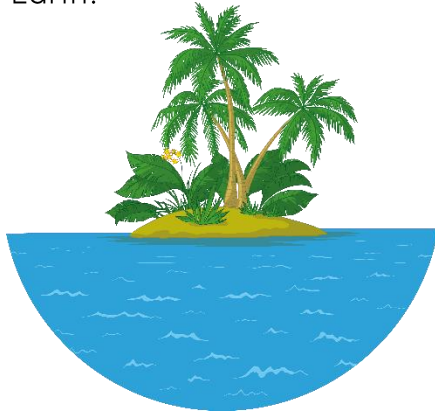
Earth's Features

Name _____ Date _____

Bodies of Water

1. Which of the following is the largest body of water on Earth?

- (a) River
- (b) Lake
- (c) Ocean
- (d) Pond



2. What type of body of water flows from higher ground to lower ground?

- (a) Ocean
- (b) River
- (c) Pond
- (d) Lake



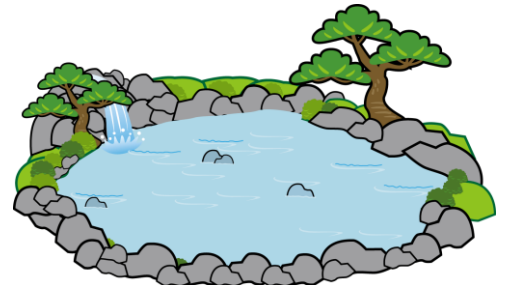
3. Which body of water is usually surrounded by land and can be small or large?

- (a) Lake
- (b) Ocean
- (c) River
- (d) Sea



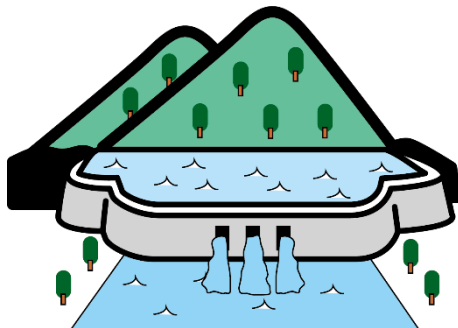
4. What is a small body of still water often found in parks or gardens called?

- (a) Ocean
- (b) River
- (c) Pond
- (d) Sea



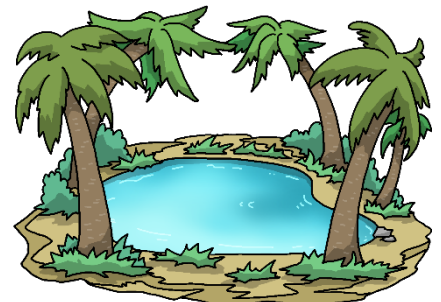
5. Which of the following bodies of water is usually man-made and stores water for use?

- (a) Reservoir
- (b) River
- (c) Lake
- (d) Ocean



6. Which body of water is often found in deserts and dries up quickly?

- (a) Ocean
- (b) Lake
- (c) Pond
- (d) Oasis



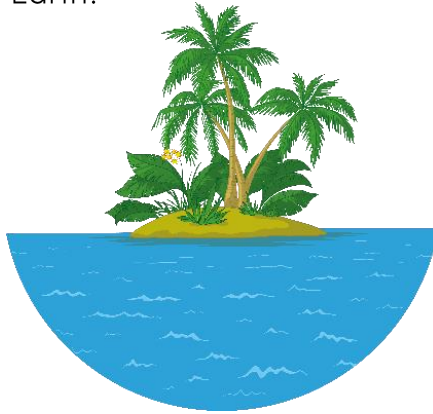
Answer Key

Name _____ Date _____

Bodies of Water

1. Which of the following is the largest body of water on Earth?

- (a) River
- (b) Lake
- (c) Ocean
- (d) Pond



2. What type of body of water flows from higher ground to lower ground?

- (a) Ocean
- (b) River
- (c) Pond
- (d) Lake



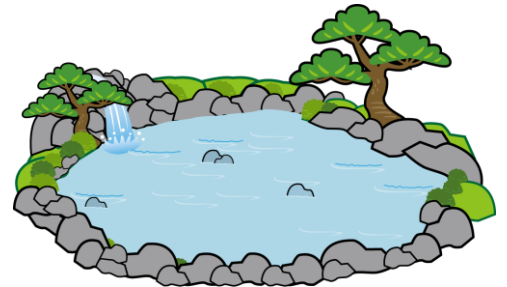
3. Which body of water is usually surrounded by land and can be small or large?

- (a) Lake
- (b) Ocean
- (c) River
- (d) Sea



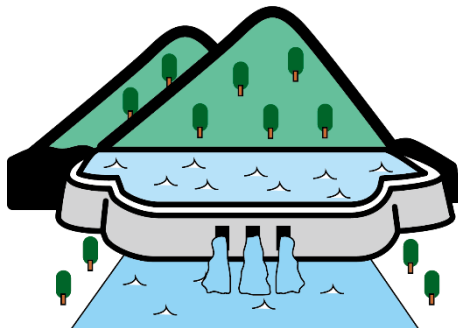
4. What is a small body of still water often found in parks or gardens called?

- (a) Ocean
- (b) River
- (c) Pond
- (d) Sea



5. Which of the following bodies of water is usually man-made and stores water for use?

- (a) Reservoir
- (b) River
- (c) Lake
- (d) Ocean



6. Which body of water is often found in deserts and dries up quickly?

- (a) Ocean
- (b) Lake
- (c) Pond
- (d) Oasis

