

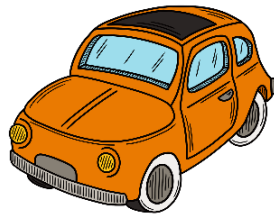
# Energy

Name \_\_\_\_\_ Date \_\_\_\_\_

## Forms of Energy

1. What type of energy does a car have when it is parked on a hill?

- (a) Chemical energy
- (b) Gravitational/potential energy
- (c) Kinetic energy
- (d) Thermal energy



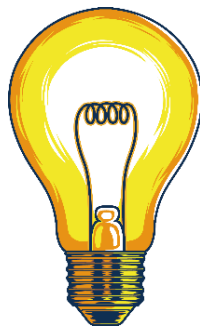
2. When you rub your hands together, what type of energy do you create?

- (a) Electrical energy
- (b) Sound energy
- (c) Heat energy
- (d) Light energy



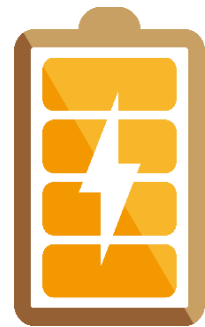
3. Which of the following devices converts electrical energy into light energy?

- a) Battery
- b) Solar panel
- c) Lightbulb
- d) Wire



4. What type of energy does a battery store?

- (a) Thermal energy
- (b) Sound energy
- (c) Chemical energy
- (d) Light energy



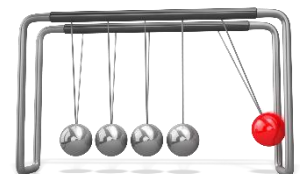
5. When a ball rolls down a hill, what happens to its potential energy?

- (a) It stays the same.
- (b) It decreases and converts to kinetic energy.
- (c) It increases and converts to light energy.
- (d) It disappears.



6. What is the Law of Conservation of Energy?

- (a) Energy can be created and destroyed.
- (b) Energy can neither be created nor destroyed.
- (c) Energy is only used in living things.
- (d) Energy is stored in the sun.



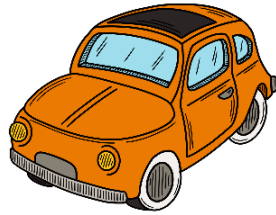
# Answer Key

Name \_\_\_\_\_ Date \_\_\_\_\_

## Forms of Energy

1. What type of energy does a car have when it is parked on a hill?

- (a) Chemical energy
- (b) Gravitational/potential energy
- (c) Kinetic energy
- (d) Thermal energy



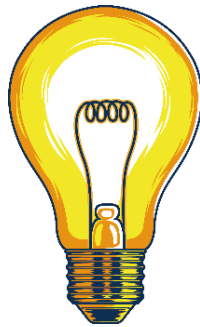
2. When you rub your hands together, what type of energy do you create?

- (a) Electrical energy
- (b) Sound energy
- (c) Heat energy
- (d) Light energy



3. Which of the following devices converts electrical energy into light energy?

- a) Battery
- b) Solar panel
- c) Lightbulb
- d) Wire



4. What type of energy does a battery store?

- (a) Thermal energy
- (b) Sound energy
- (c) Chemical energy
- (d) Light energy



5. When a ball rolls down a hill, what happens to its potential energy?

- (a) It stays the same.
- (b) It decreases and converts to kinetic energy.
- (c) It increases and converts to light energy.
- (d) It disappears.



6. What is the Law of Conservation of Energy?

- (a) Energy can be created and destroyed.
- (b) Energy can neither be created nor destroyed.
- (c) Energy is only used in living things.
- (d) Energy is stored in the sun.

