

# Earth Systems

Name \_\_\_\_\_ Date \_\_\_\_\_

## Weathering Erosion and Deposition

1. Which of the following is an example of physical weathering?

- (a) Dissolving limestone
- (b) Breaking rocks apart due to freezing
- (c) Grinding rocks down by windblown sand
- (d) All of the above



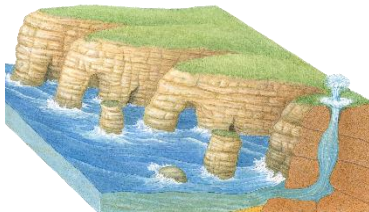
2. What is the main agent of erosion in this picture?

- (a) Wind
- (b) Gravity
- (c) Water
- (d) Ice



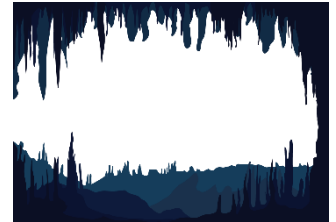
3. This image shows an example of:

- (a) Physical weathering
- (b) Chemical weathering
- (c) Erosion
- (d) Deposition



4. What process forms these cave features?

- (a) Erosion
- (b) Deposition
- (c) Chemical weathering
- (d) Physical weathering



5. Sand dunes are an example of:

- (a) Wind erosion only
- (b) Wind deposition only
- (c) Both wind erosion and deposition
- (d) Neither erosion nor deposition



6. The Grand Canyon is a landform created by:

- (a) Wind erosion
- (b) Water erosion
- (c) Ice glaciers
- (d) All of the above.



# Answer Key

Name \_\_\_\_\_ Date \_\_\_\_\_

## Weathering Erosion and Deposition

1. Which of the following is an example of physical weathering?

- (a) Dissolving limestone
- (b) Breaking rocks apart due to freezing
- (c) Grinding rocks down by windblown sand
- (d) All of the above



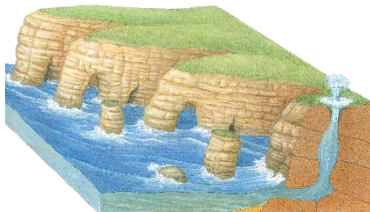
2. What is the main agent of erosion in this picture?

- (a) Wind
- (b) Gravity
- (c) Water
- (d) Ice



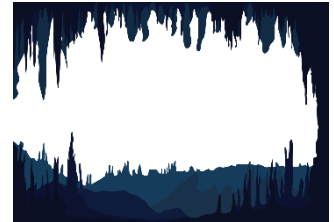
3. This image shows an example of:

- (a) Physical weathering
- (b) Chemical weathering
- (c) Erosion
- (d) Deposition



4. What process forms these cave features?

- (a) Erosion
- (b) Deposition
- (c) Chemical weathering
- (d) Physical weathering



5. Sand dunes are an example of:

- (a) Wind erosion only
- (b) Wind deposition only
- (c) Both wind erosion and deposition
- (d) Neither erosion nor deposition



6. The Grand Canyon is a landform created by:

- (a) Wind erosion
- (b) Water erosion
- (c) Ice glaciers
- (d) All of the above.

