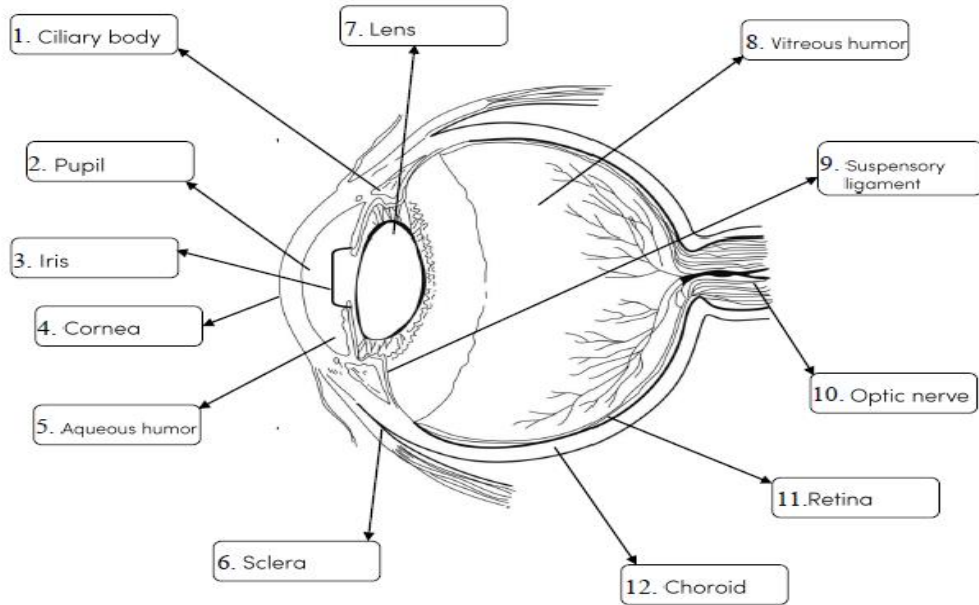


Parts of the Human Eye and their Functions

Name _____ Date _____

Provide the functions for the indicated parts on the diagram of an eye.



1. Ciliary body

7. Lens

2. Pupil

8. Vitreous humor

3. Iris

9. Suspensory ligament

4. Cornea

10. Optic nerve

5. Aqueous humor

11. Retina

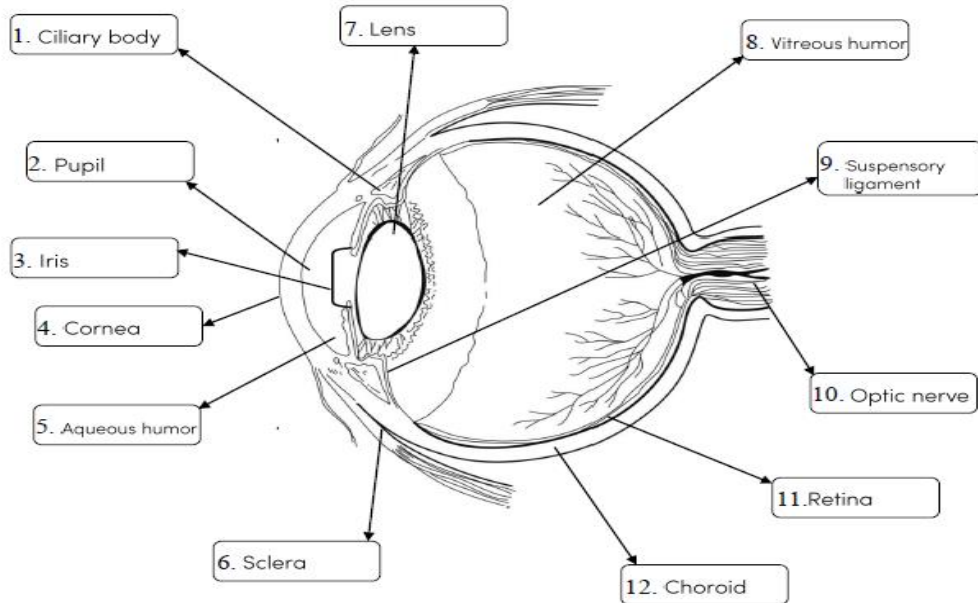
6. Sclera

12. Choroid

Answer Key

Name _____ Date _____

Provide the functions for the indicated parts on the diagram of an eye.



1. Ciliary body produces aqueous humor.

7. Lens focuses light on the Retina.

2. Pupil lets light into the eye.

8. Vitreous humor maintains the round shape.

3. Iris controls pupil for clear vision.

9. Suspensory ligament supports the lens.

4. Cornea protects the eye against infections.

10. Optic nerve transmits impulses to the brain.

5. Aqueous humor stores nutrients.

11. Retina converts light into electrical signals.

6. Sclera supports the eyeball.

12. Choroid brings nutrients to the eye.